

Elegance
and
aesthetics

in orthodontics

Logic[™]
Line

orthodontic

ceramic

brackets



Pure aesthetics and logic management of friction

The special design of brackets and the use of translucent ceramics combine the best aesthetics with low friction biomechanics



Leone LOGIC LINE™ aesthetic ceramic brackets are manufactured with a sintering process to achieve the purest alumina and a polycrystalline structure with an average uniform grain.

The result is a bracket combining the best translucence with a superior mechanical resistance thus assuring a naturally aesthetic look to match every tooth shade.

LOGIC LINE™ ceramic brackets are free of any metal, even in the slot and totally anti-allergenic.

When combined with Leone *Slide*™* ligatures, the new LOGIC LINE™ aesthetic brackets provide all the advantages of low friction biomechanics, with shorter therapeutic times for maximum patient comfort.



The unique mechanic retention offered by the bracket's pad makes it possible for the user to apply the new LOGIC LINE™ aesthetic brackets with any good orthodontic adhesive. No additional specific primers are required.



Polished surfaces, smooth edges and low profile design make the LOGIC LINE™ ceramic brackets superior in comfort.

Logic™
Line
orthodontic
ceramic
brackets

*patented

Logic[™] *Line* CERAMIC brackets are available in the **STEP** and **Roth** prescriptions

The clear 'aesthetic' effect can be further enhanced by applying the innovative **Slide[™]* AQUA[™]** ligatures to the brackets. These ligatures are not subject to staining by oral liquids and even more resistant to discoloration, a recurring issue with transparent elastomers. With **Slide[™]* AQUA[™]** changing ligatures frequently is no longer necessary.

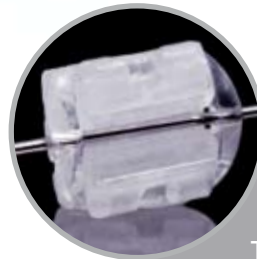


Courtesy of Dr. R. Sacerdoti

Versatility in therapeutic options with ligatures

The clinician now has the option to use either low friction **Slide[™]* AQUA[™]** ligatures or conventional ones; this allows a versatility in therapeutic options not offered by other methods currently available.

During treatment, **Slide[™]* AQUA[™]** ligatures are kept safely in place and integrated in the bracket profile thanks to the housing in the bracket's body.



LOGIC LINE™ ceramic D.B. BRACKETS

STEP SYSTEM LOGIC LINE™					
		torque	ang.		
		.022"			
			+17°	+4°	$\frac{1}{1}$ F5921-02 $\frac{1}{1}$ F5921-03
			+9°	+8°	$\frac{2}{2}$ F5922-02 $\frac{2}{2}$ F5922-03
			-7°	+11°	$\frac{3}{3}$ F5913-02 $\frac{3}{3}$ F5913-03
			-7°	+2°	$\frac{4}{4}$ F5919-02 $\frac{4}{4}$ F5919-03
			-7°	+2°	$\frac{5}{5}$ F5919-02 $\frac{5}{5}$ F5919-03
			-6°	0°	$\frac{1}{1}$ F5920-06 $\frac{1}{1}$ F5920-07
			-6°	0°	$\frac{2}{2}$ F5920-06 $\frac{2}{2}$ F5920-07
			-6°	+5°	$\frac{3}{3}$ F5913-06 $\frac{3}{3}$ F5913-07
			-12°	+2°	$\frac{4}{4}$ F5914-06 $\frac{4}{4}$ F5914-07
			-17°	+2°	$\frac{5}{5}$ F5915-06 $\frac{5}{5}$ F5915-07

Packs of 1

ROTH SYSTEM LOGIC LINE™					
		torque	ang.		
		.022"			
			+12°	+5°	$\frac{1}{1}$ F5921-12 $\frac{1}{1}$ F5921-13
			+8°	+9°	$\frac{2}{2}$ F5922-12 $\frac{2}{2}$ F5922-13
			-2°	+13°	$\frac{3}{3}$ F5913-12 $\frac{3}{3}$ F5913-13
			-7°	0°	$\frac{4}{4}$ F5919-12 $\frac{4}{4}$ F5919-13
			-7°	0°	$\frac{5}{5}$ F5919-12 $\frac{5}{5}$ F5919-13
			0°		$\frac{1}{1}$ F5920-05
			0°		$\frac{2}{2}$ F5920-05
			-11°	+7°	$\frac{3}{3}$ F5913-16 $\frac{3}{3}$ F5913-17
			-17°	0°	$\frac{4}{4}$ F5914-16 $\frac{4}{4}$ F5914-17
			-22°	0°	$\frac{5}{5}$ F5915-16 $\frac{5}{5}$ F5915-17

Packs of 1

STEP SYSTEM LOGIC LINE™			
	6 brackets	10 brackets	
	3 2 1 1 2 3	5 4 3 2 1 1 2 3 4 5	
.022"	F5906-20	F5910-20	
	12 brackets	20 brackets	
	3 2 1 1 2 3 3 2 1 1 2 3	5 4 3 2 1 1 2 3 4 5 5 4 3 2 1 1 2 3 4 5	
.022"	F5912-20	F5920-20	

ROTH SYSTEM LOGIC LINE™			
	6 brackets	10 brackets	
	3 2 1 1 2 3	5 4 3 2 1 1 2 3 4 5	
.022"	F5906-21	F5910-21	
	12 brackets	20 brackets	
	3 2 1 1 2 3 3 2 1 1 2 3	5 4 3 2 1 1 2 3 4 5 5 4 3 2 1 1 2 3 4 5	
.022"	F5912-21	F5920-21	

The orthodontic brackets illustrated in this pamphlet are not intended to be a duplication of any other existing system nor does Leone S.p.a imply that they are endorsed by the above mentioned doctors or schools in any form.

Logic Line™

orthodontic ceramic brackets



F5920-81 STEP & Slide™ LOGIC LINE™ ceramic starter kit

The starter kit features all the components needed to test the efficiency of the new STEP Logic Line™ system in the initial alignment and levelling stages of treatment.

Composition of the kit:

- 1 case (20 pcs) Logic Line™ STEP system ceramic brackets .022"
- 1 MEMORIA® archwire "V" bend round Ø .014" upper
- 1 MEMORIA® archwire "V" bend round Ø .014" lower
- 4 modules (24 pcs) Slide™ AQUA™ ligatures medium
- 2 modules (12 pcs) Slide™ AQUA™ ligatures small
- 4 tubes D.B. Extremo no-nichel



LEONE S.p.a Orthodontics and Implantology

Via P. a Quaracchi, 50 • 50019 Sesto Fiorentino • FIRENZE • Phone +39.0553044620 • Fax +39.055304405 • info@leone.it www.leone.it